

Sciencetech ITS PLC



Normally the users who learn PLC, they just write small ladder programs and test them by using some LEDs and switches. But when practitioner goes to the real world and observes the big processes running with PLC he find him self in big trouble and loses confidence to understand and to do such heavy programming for PLC and if he is allowed to do programming for big processes then it can become dangerous because in industries machines are costly and by wrong programming machines can do injury to machines as well as man power. Then how will he learn?

Sciencetech ITS (Interactive training system) PLC provide virtual environment using 3D real time graphics, physics, real sound and total interactivity which you can do with your any real PLC and can practice real world programming of PLC. ITS PLC will give you real components which are used in industry and by using DAQ card you can work them according to your need. So the user who has learned PLC programming with ITS PLC be able to do real world programming directly.

Sciencetech ITS PLC Professional Edition presents five training systems based on real world industrial scenarios. Each system offers standard problems found in PLC programming. The systems are presented in order of increasing level of difficulty.

Features

- **3D realistic graphics**
- **Real-time physics that closely emulates what happens in real life**
- **3D real-time sound**
- **Total interactivity with the systems**
- **Friendly user interface**
- **Easy and fast to setup**

Scope of Learning

Study and use of :

- Sensor & Actuator
- Ladder Programming
- Programming of sorting system using PLC
- Programming of Batching system using PLC
- Programming of Pallitizer system using PLC
- Programming of Pick & Place system using PLC
- Programming of Automatic warehouse system using PLC

Technical Specifications

Digital Input	: 16
Digital Input Range	: 5-50V DC
Interrupt Input	: X0,X8
Digital Output	: 16
Digital Output Ranges	: 5-40V DC
Optical Isolation	: 2500 VDC
Sink Current	: 100mA/channel max 1.1A
Timer/Counter	: 2
Resolution	: 32 bit counter
Time Base	: 1 MHz
Power Consumption	: 5V, 350mA max.
Power supply	: USB powered
PC Interface	: USB 2.0

Scientech ITS PLC

Sorting



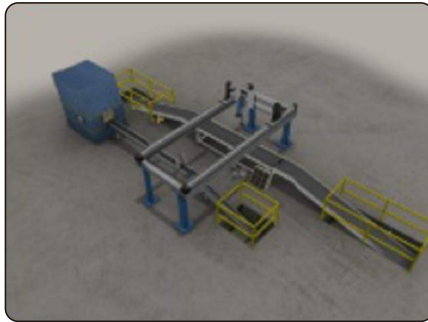
Batching



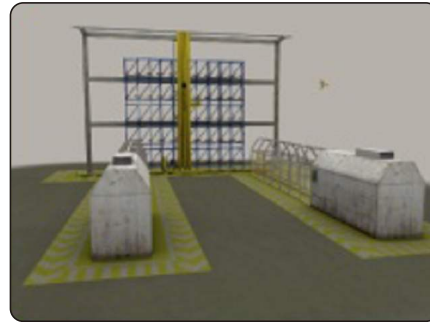
Palletizer



Pick & Place



Aut. Warehouse



System	Description
Sorting	: Transport cases from the entry bay to the elevators, sorting them by height
Batching	: Mix three primary colors (red, green and blue) in order to obtain a desired color
Palletizer	: Palletize cases up to three layers
Pick & Place	: Place parts inside boxes through a three axes manipulator
Aut. Warehouse	: Transport, store and retrieve boxes from a rack

Interactivity

- Interact with the system as you would in a real system
- Add and remove objects from the production circuit, at any time during the simulation
- Cause error situations or system jams
- Test individual parts of the system; for example: test a conveyor table

Product Includes

- Software CD
- Advantech USB-4750 DAQ Board
- USB Cable
- USB License Key

Scientech ITS PLC Professional Edition works with PLCs from any manufacturer including: Allen-Bradley, Festo, Hitachi, Mitsubishi, Moeller, Omron, Siemens, Telemecanique, Unitronics and many others.

Note:

- Preferably with more number of inputs and outputs of Industrial PLC like: Scientech 2400B, Scientech 2400C, Scientech 2400E, Scientech 2400G, and Scientech 2400GN
- Its required 12 Digital input and 8 Digital outputs PLC

Marketed in by-

Scientech Technologies Pvt. Ltd.

94, Electronic Complex, Pardesipura, Indore- 452 010 India,
 ☎ +91-731- 4211100, ✉ info@scientech.bz, 🌐 www.ScientechWorld.com
 Helpline: +919893270301



subject to change