



Scientech 4073P Programmable Power Supply is a versatile instrument with facility to interfaced with PC. The front panel with keypad and cursor, makes it user friendly.

It can be set to use as a Constant Voltage and Constant Current source. With low ripple and excellent Line and Load regulation, Scientech 4073P is fully protected against over load, over voltage, over current, over heat and short circuit.

### Features

- DC 0 - 30V / 2A
- LCD screen for Voltage and Current readout
- Current limit exceed indication (LED)
- Step increment for Voltage
- User friendly settings of Voltage and Current using keypad and encoder
- Constant Voltage source and Constant Current source
- PC Interface USB

### Technical Specifications

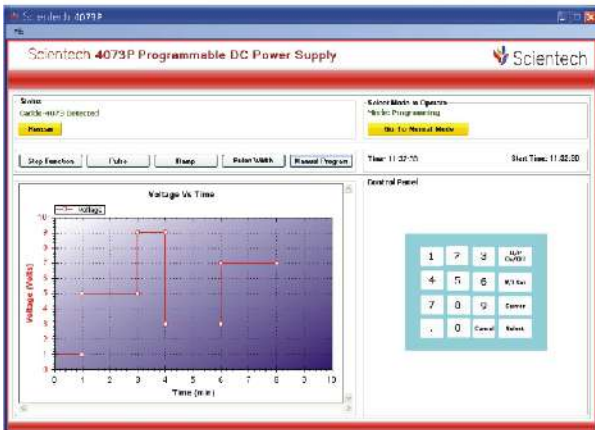
DC Output	: 0 - 30 V, 2A
Current Limit	: 0 - 2A
Setting Resolution	: Voltage : 100 mV Current : 10 mA
Internal Resistance	: $\leq 10 \text{ m}\Omega$
Stability	: $\leq 2.5 \text{ mV}$ at 30 V / 2A
Recovery Time	: $\leq 50\text{ms}$
Load Regulation	: $\leq (0.05 \% + 10 \text{ mV})$
Line Regulation	: $\leq (0.05 \% + 10 \text{ mV})$
Temperature Coefficient	: $\leq (0.05 \% + 5 \text{ mV} / ^\circ\text{C})$
Ripple & Noise	: $\leq 1 \text{ mV}_{\text{rms}}$
Display	: LCD (backlit) for voltage and current
Accuracy	: $\pm(1\% + 1 \text{ digit})$
Over Range Indication	: Glowing 'Over Current' LED indicates Overload
Interface	: USB
Protective modes	: Over load, over voltage, over current, over heat and short circuit protection.

### General Information

Insulation	: Between chasis & output terminals $>10 \text{ M}\Omega$ at 500 V DC Between chasis & AC plug $>50 \text{ M}\Omega$ at 500 V DC
Power Supply	: 230 V, $\pm 10 \%$ , 50 / 60 Hz
Operating Temp.	: 0 - 40°C, 80 % RH
Dimension (mm)	: W 198 × D 278 × H 90
Weight	: 4 Kg approximately
Product Tutorial	: Online on <a href="http://www.ScientechLearning.com">www.ScientechLearning.com</a>
Included Accessories	: Mains cord, USB cable

### Programming modes

The Programmable Power Supply can be operated through PC, parameters such as V-set, I-set, cursor and output on/off can be set.

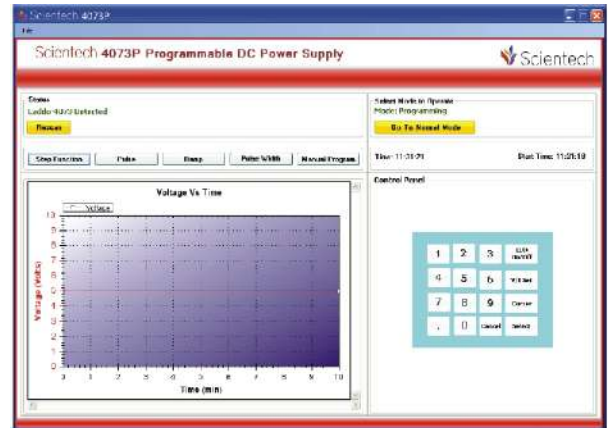


Scientech 4073P Programmable DC Power Supply  
Software Window

In programming mode, you can set the output voltage linearly with respect to time in four different ways :

- Step mode
- Pulse mode
- RAMP mode
- Pulse width Mode

Different types of standard waveforms like RAMP, Pulse, Square, can be generated with voltage with respect to time defined by the users.

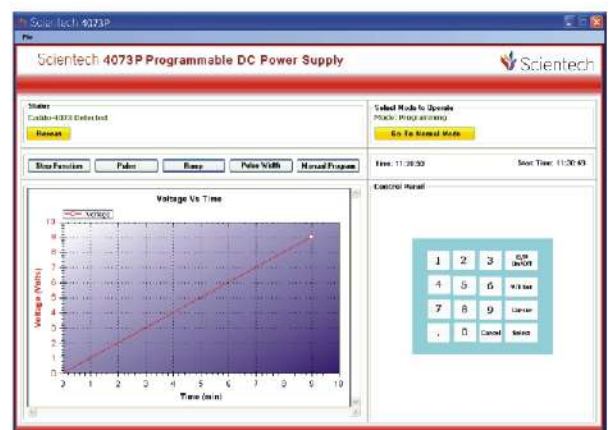


Scientech 4073P Programmable DC Power Supply  
Software Window

When Power Supply is operated in Manual Program. The data can be entered through software key pad and Arbitrary output can be generated.

The power supply can be programmed to perform set of predefined output voltage with respect to time. These voltages and time varying data can be fed through software, manually.

The test can be conducted and observed at the output terminals of the instrument



Scientech 4073P Programmable DC Power Supply  
Software Window

